

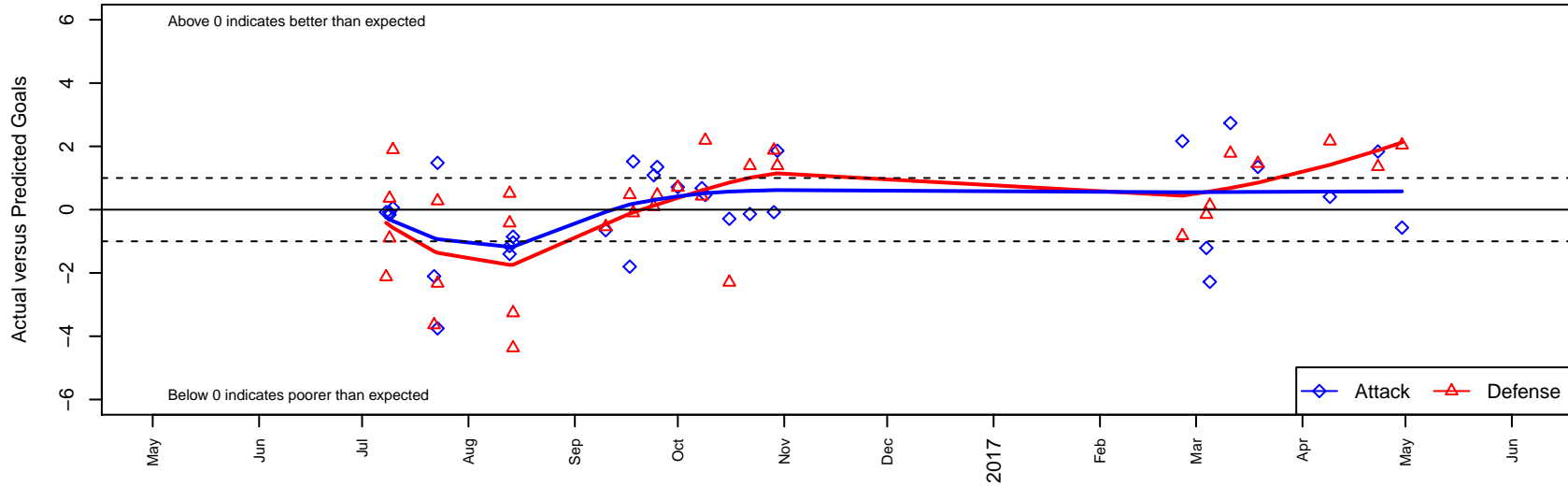
NEU Blue B05

Northeast United SC
 Portland, OR
 B05 total strength=586
 attack=0.74 defense=0.31
 fall league = PTT B05 Div 1 White
 spr league = Spr OYS B05 Div 1 White

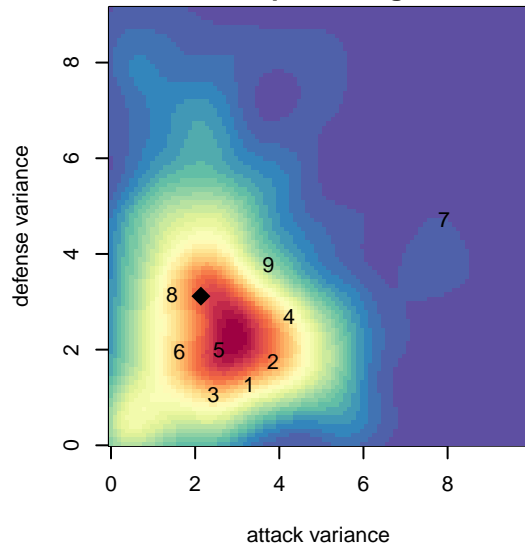
alt names used:
 NEU PDX NEU 05B BLUE (OR)
 NEU PDX NEU 05B BLUE (OR)
 NEU PDX NEU 05B BLUE
 NEU PDX 05B Blue
 NEU PDX 05B Blue

Venues played:
 2016 PCU Summer Classic U12 Silver
 2016 Oswego Nike Cup Bronze U12
 2016 Bend Premier Cup Darren Mattocks (Silver)
 2016 PTT B05 Division 1 White
 2016 Spr OYS B05 Division 1 White

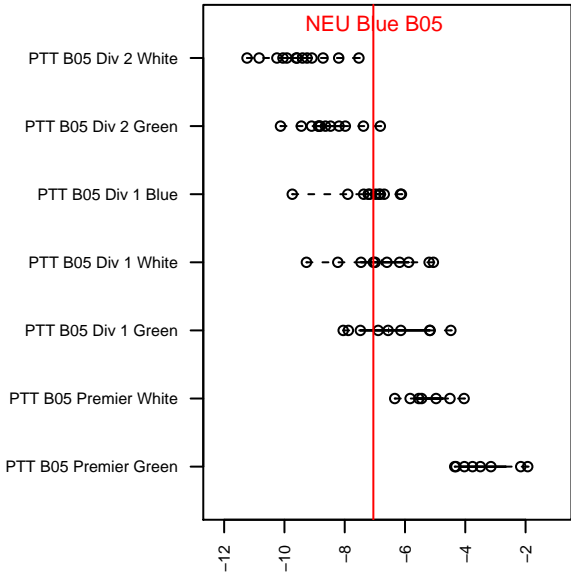
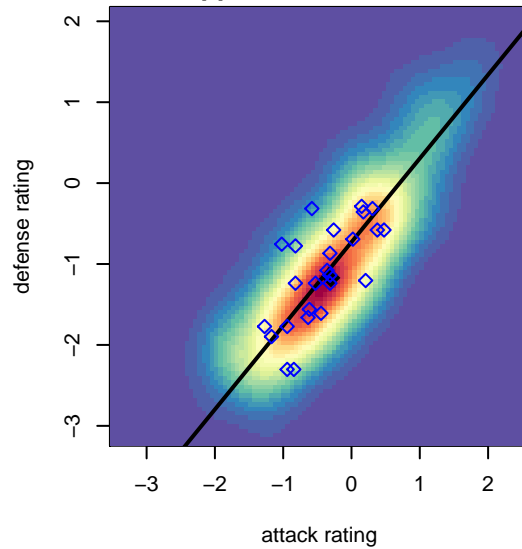
NEU Blue B05
 Dots are actual minus expected GF (blue circles) and GA (red triangles).
 Blue line is smoothed change in attack strength. Red is smoothed change in defense strength.



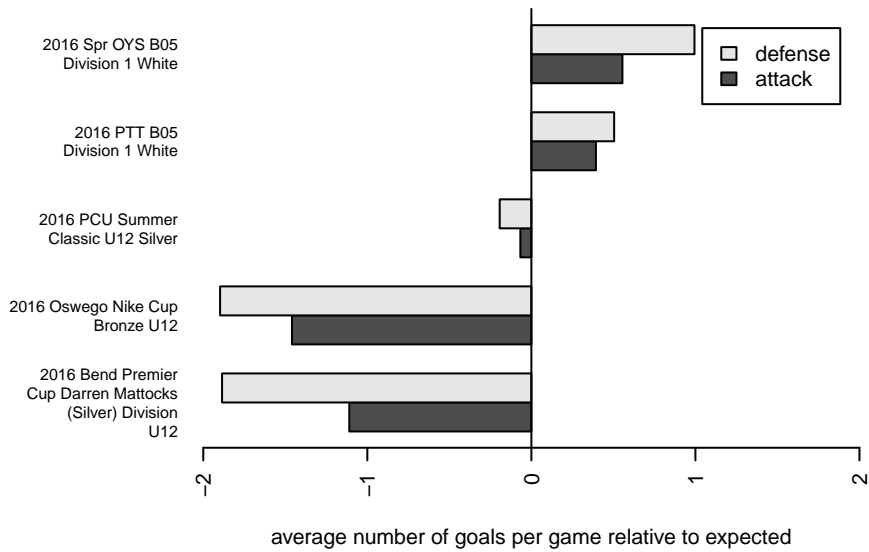
**attack and defense variance (black dot)
relative to other teams
and top 10 in region**



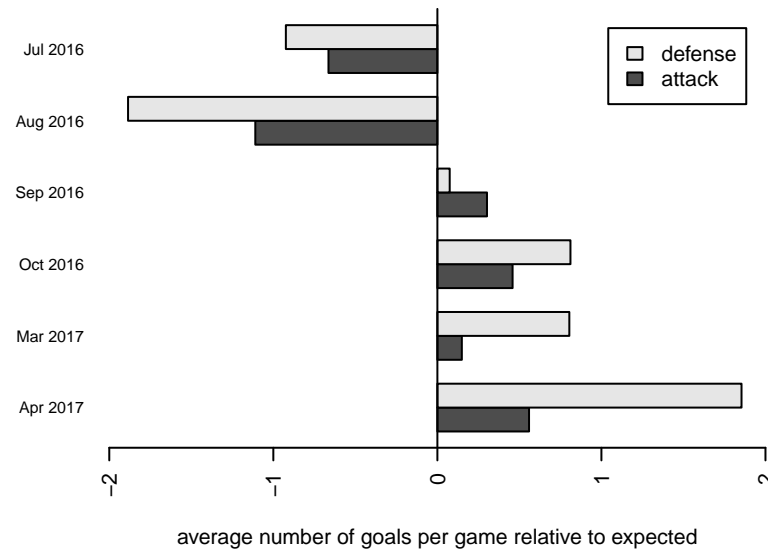
**attack and defense rating
relative to others at age
and all opponents in last 13 months**



Performance relative to 13 month average



Performance relative to 13 month average



| date | home | | away | | venue | pred.home | pred.away |
|-------------|-------------------------------|---|--------------------------|---|--|------------------|------------------|
| 2017-04-30 | FC West Red Devils B05 | 0 | NEU Blue B05 | 1 | 2016 Spr OYS B05 Division 1 White | 2.04 | 1.57 |
| 2017-04-23 | NEU Blue B05 | 3 | WUSC White B05 | 2 | 2016 Spr OYS B05 Division 1 White | 1.16 | 3.36 |
| 2017-04-09 | Foothills SC Celtic White B05 | 1 | NEU Blue B05 | 2 | 2016 Spr OYS B05 Division 1 White | 3.16 | 1.59 |
| 2017-03-19 | NEU Blue B05 | 3 | RVSC Timbers White B05 | 0 | 2016 Spr OYS B05 Division 1 White | 1.65 | 1.46 |
| 2017-03-11 | NEU Blue B05 | 5 | 4-H Arsenal B05 | 3 | 2016 Spr OYS B05 Division 1 White | 2.26 | 4.78 |
| 2017-03-05 | Bend FC Timbers White B05 | 2 | NEU Blue B05 | 1 | 2016 Spr OYS B05 Division 1 White | 2.13 | 3.28 |
| 2017-03-04 | Bend FC Timbers Black B05 | 2 | NEU Blue B05 | 1 | 2016 Spr OYS B05 Division 1 White | 1.85 | 2.21 |
| 2017-02-25 | NEU Blue B05 | 4 | 4-H Cosmos B05 | 3 | 2016 Spr OYS B05 Division 1 White | 1.83 | 2.17 |
| 2016-10-30 | NEU Blue B05 | 3 | HSC Boca B05 | 5 | 2016 PTT B05 Division 1 White | 1.14 | 6.39 |
| 2016-10-29 | FC Portland White B05 | 3 | NEU Blue B05 | 1 | 2016 PTT B05 Division 1 White | 4.88 | 1.08 |
| 2016-10-22 | HSC Boca B05 | 5 | NEU Blue B05 | 1 | 2016 PTT B05 Division 1 White | 6.39 | 1.14 |
| 2016-10-16 | NEU Blue B05 | 2 | 4-H Spartans B05 | 5 | 2016 PTT B05 Division 1 White | 2.29 | 2.70 |
| 2016-10-09 | NEU Blue B05 | 2 | ETFC Marseille Red B05 | 1 | 2016 PTT B05 Division 1 White | 1.54 | 3.19 |
| 2016-10-08 | NEU Blue B05 | 2 | SESC Kings Blue B05 | 4 | 2016 PTT B05 Division 1 White | 1.32 | 4.43 |
| 2016-10-01 | 4-H Spartans B05 | 2 | NEU Blue B05 | 3 | 2016 PTT B05 Division 1 White | 2.70 | 2.29 |
| 2016-09-25 | RVSC Timbers White B05 | 1 | NEU Blue B05 | 3 | 2016 PTT B05 Division 1 White | 1.46 | 1.65 |
| 2016-09-24 | GPYSC Blue B05 | 2 | NEU Blue B05 | 2 | 2016 PTT B05 Division 1 White | 2.09 | 0.91 |
| 2016-09-18 | NEU Blue B05 | 5 | THUSC Krypton Black B05 | 2 | 2016 PTT B05 Division 1 White | 3.48 | 1.90 |
| 2016-09-17 | CSC Storm White B05 | 1 | NEU Blue B05 | 2 | 2016 PTT B05 Division 1 White | 1.47 | 3.80 |
| 2016-09-10 | NEU Blue B05 | 1 | RVSC Timbers White B05 | 2 | 2016 PTT B05 Division 1 White | 1.65 | 1.46 |
| 2016-08-14 | NEU Blue B05 | 1 | Eastside Timbers Red B05 | 7 | 2016 Bend Premier Cup Darren Mattocks (S | 2.04 | 2.63 |
| 2016-08-14 | Redmond Raptors B05 | 9 | NEU Blue B05 | 0 | 2016 Bend Premier Cup Darren Mattocks (S | 5.74 | 0.85 |
| 2016-08-13 | Redding Kaos B05 | 2 | NEU Blue B05 | 2 | 2016 Bend Premier Cup Darren Mattocks (S | 2.51 | 3.15 |
| 2016-08-13 | NEU Blue B05 | 2 | ETFC Marseille White B05 | 2 | 2016 Bend Premier Cup Darren Mattocks (S | 3.40 | 1.58 |
| 2016-07-23 | PCU Black 1 B05 | 4 | NEU Blue B05 | 1 | 2016 Oswego Nike Cup Bronze U12 | 1.67 | 4.75 |
| 2016-07-23 | NEU Blue B05 | 8 | THUSC Krypton Green B05 | 1 | 2016 Oswego Nike Cup Bronze U12 | 6.52 | 1.28 |
| 2016-07-22 | SESC Kings White B05 | 5 | NEU Blue B05 | 2 | 2016 Oswego Nike Cup Bronze U12 | 1.36 | 4.10 |
| 2016-07-10 | FC Salmon Creek White B05 | 2 | NEU Blue B05 | 1 | 2016 PCU Summer Classic U12 Silver | 3.89 | 0.94 |

| date | home | | away | | venue | pred.home | pred.away |
|-------------|-----------------------|---|-----------------------|---|------------------------------------|------------------|------------------|
| 2016-07-09 | NEU Blue B05 | 1 | Southside SC Azul B05 | 6 | 2016 PCU Summer Classic U12 Silver | 1.08 | 5.10 |
| 2016-07-09 | WUSC White B05 | 3 | NEU Blue B05 | 1 | 2016 PCU Summer Classic U12 Silver | 3.36 | 1.16 |
| 2016-07-08 | FC Portland White B05 | 7 | NEU Blue B05 | 1 | 2016 PCU Summer Classic U12 Silver | 4.88 | 1.08 |